



Our Services:

We specialize in providing semi/full custom solutions to meet customers unique requirements in many industrial embedded applications.

Embedded Linux based solutions.



Simplifying **Technology**



giving Embedded Solutions. E S Labs
(R&D)
IND

Embedded Software labs (ESL)
a Research and Product Development
Organization, with Well Experienced Embedded Technology
Experts.

An Organization which meets the requirements of Industry
by giving Business Solutions for Embedded Technology
based Products.

ESL ,offers a unique combination of research and
development consultancy, embedded software products and
software services, and works with Semiconductor Vendors,
Terminal Device manufacturers and Operators across the
world.

We are a knowledge-driven company that values
transparent business practices and provides comprehensive
solutions to help businesses achieve their goals of rapid
product innovation and profitability. Our core values revolve
around passion and integrity. Technology is our passion. We
dare to explore new opportunities to find new ways to solve
technical challenges.

E S Labs
(R&D)

#103, Mahindra Residency,
Ameerpet, Hyderabad.
Pin: 500038. Andhra Pradesh.
INDIA.

www.embeddedsoftwarelabs.com

©: 040-66776365,9676038540.

Embedded Software Labs

(R&D) – INDIA.

Embedded solutions that work for your business.

COMPACT SIZE. PORTABLE. MORE FLEXIBLE. USER FRIENDLY.

SKEVLE

The demand in the space of embedded technology lies in creating world class and compelling multimedia and portable solutions on an Application Processor environment. With the advent of VLSI technology FPGA design architecture and OS designs becoming more powerful the need of the hour is to create application environments and applications that market requires.

SKEVLE : Flexible solutions for your business needs

SKVELE Features

The new **SKEVLE** gives you a better experience for work multimedia requirements. **SKEVLE** offers superlative experience with an elegant and piggy back feature. It can cater to standard resolutions, easy to use, reconfigurable to custom requirements. Controllable / Free running display with audio. Better sound quality .Battery back-up support. Portable.

Embedded Software Labs

Activities:

Business solutions using Embedded Technology from inception to Product development.
Hardware – Software co-design.
DSP Audio & Video codecs implementation on Hardware
BSP/LSP for any OS based applications.

SKEVLE SUPPORT SOLUTIONS

- VALUE ADDED SERVICES.
- TECHNICAL ADD ONS.
- 2 YRS REPLACEMENT WARRANTY.
- FREE APPLICATION LOADING

SERVICES.



CUSTOM SOLUTIONS

SKEVLE is a unique portable product used, in any Industry, Pharma,.. as front end panel for their product advertisements.



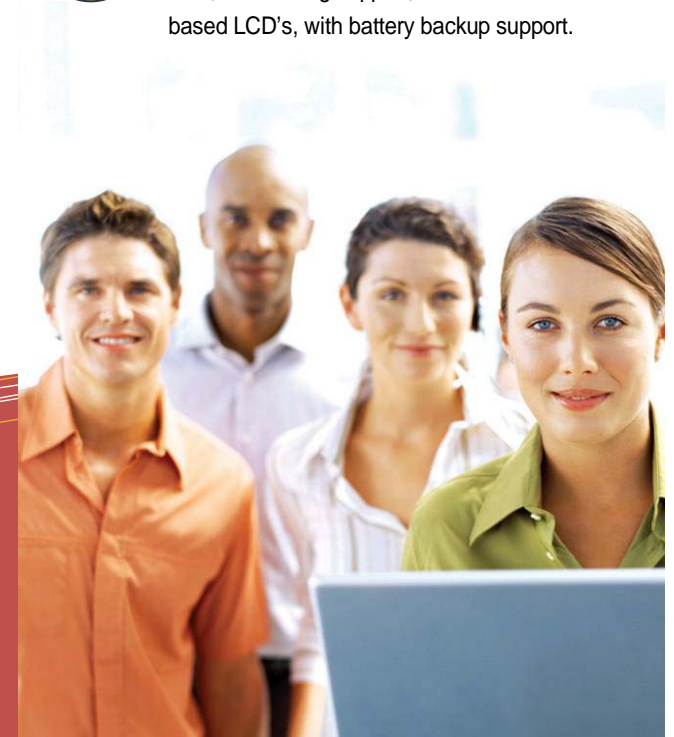
WEB SOLUTIONS

SKEVLE can be extended to web based data logging system. Portable Internet browsing facility and data saving.



SKEVLE NETBOOK

SKEVLE used as a net book with equal performance of a PC supporting USB, MMC card, Networking support, Touch screen based LCD's, with battery backup support.



WE'VE WORKED WITH A DIVERSE CUSTOMER BASE. HOW CAN WE HELP YOU?

Embedded Software Labs - (R&D), Hyd. India. URL: www.embeddedsoftwarelabs.com